

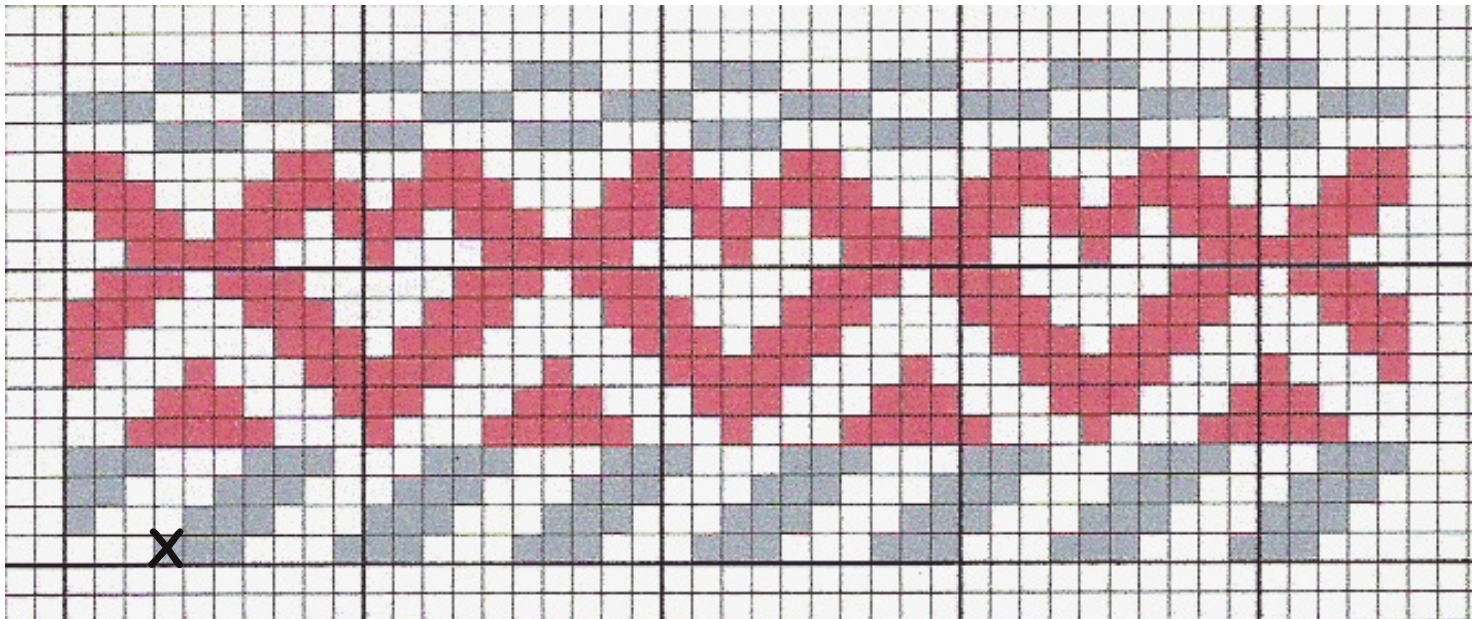


Linked Hearts Basket

Supplies Needed:

- 8" Square Noched Handle with Glued Shelf
- 1/4" Flat Reed
- 1/4" Flat Reed dyed Cherry Red
- #2 Round Reed
- 1/2" Flat-Oval Reed
- #6 Round Reed
- 3/16" Flat-Oval Reed (this is your lashing material, use the size you prefer)

1. Out of 1/4" flat reed, cut 27 stakes 26" long and 45 stakes 23" long. Mark the midpoints on the rough side. Soak in warm water for about 1 minute. Lay the 26" stakes in front of you side-by-side horizontally (with their midpoints facing up and all lined up) and hold them down with a spokeweight. Weave the first 23" stake perpendicular to the 26" stakes in an over 3, under 3 pattern making sure to weave it where all the 26" stakes midpoints line up. This is your middle stake. Mark it so you'll remember which one it is. Weave 22 of the 23" stakes to the right of the marked (or middle) stake in an over 3, under 3 twill pattern making sure to keep the midpoints lined up. Now weave the 22 remaining 23" stakes to the left of the marked stake, keeping the twill pattern going. Make sure all the stakes are tight against each other (no spaces in between them) and then upset all the stakes.



2. The diagram above shows the weaving pattern you should use up the side of the basket. The diagram is of the complete "handle side" of the basket and should be woven exactly as diagramed. An "X" marks which stake you should start your first row on the outside of--that is the 4th 23" stake from the end. (The gray color is when the 1/4" natural weaves on the outside of the stakes.) Weave the sides as diagramed. You will overlap each row and then start a new row. Once you've finished all 17 rows of weaving, twine 3 rows around the basket using #2 round reed. You will twine around the 3-stake groups you created when weaving the last 3 rows of 1/4" flat natural.

3. Cut off the 3-stake groups and tuck them as a unit down into the basket under 2 rows of weaving. Cut the 2 3-stake groups that contain the marked stake from step 1 off flush with the top of the basket. Insert your handle into the basket behind this group of stakes. The handle will tuck behind 3 rows of weaving (rows 10, 9, and 4--if your handle reaches down this far.
4. Soak the 1/2" flat-oval reed and the #6 round reed in warm water for at least 1/2 hour. Face the top 3 rows of twining with the 1/2" flat-oval, one strip on the inside and one on the outside, flat sides against the basket. Overlap the ends and make sure any ends that show are between the 3-group stakes so that you'll cover them up with your lasher. (Also, thin the overlapped ends so that they're not too thick.) Overlappings should be at different places
5. Soak the 1/2" flat-oval reed and the #6 round reed in warm water for at least 1/2 hour. Face the top 3 rows of twining with the 1/2" flat-oval, one strip on the inside and one on the outside, flat sides against the basket. Overlap the ends and make sure any ends that show are between the 3-group stakes so that you'll cover them up with your lasher. (Also, thin the overlapped ends so that they're not too thick.) Overlappings should be at different places and not in the corners. Notch one end of the #6 round reed (you'll notch the other end when you've gone around the basket and meet the end you just notched). Take the end of a wet long piece of your lashing material and insert it into the basket between the top row of 1/4" flat and the 3 rows of twining and tuck about 3" of the lasher behind the inside piece of 1/2" flat oval. Now start wrapping the piece of #6 round reed with your lasher. It should take 2 to 4 wraps until you're at the next space between the stakes. When there, wrap around the whole border as shown in the diagram below. (Be sure to pull tight, unlike the diagram, but like the picture beside it.) When you get to where the #6 round reed meets, cut a notch to match the first one and continue until you get completely around the basket. Tuck the end up into the border if you can, or hide it under a stake or weaver. You're finished. I hope you enjoy this basket.

