

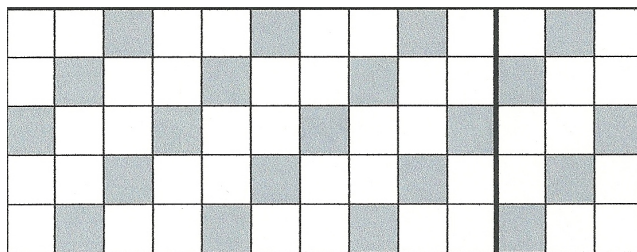


# Blue Diamond Wall Basket

## Supplies Needed:

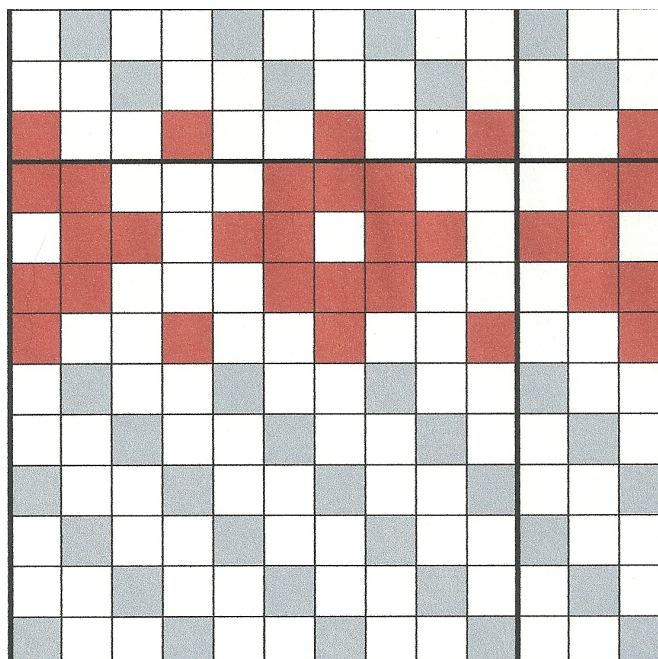
- 1/2" Flat Reed
- 1/2" Flat Dyed Turquoise (or any color)
- 1/2" Flat Oval Reed
- #3 Seagrass
- 3/16" Flat Oval Reed
- 2" Hand-carved notched Side Handle

1. Out of 1/2" flat natural, cut 5 stakes 25" and 13 stakes 20" long and mark the midpoints. Weave your base following the diagram below, rough sides up, using an under 2, over 1 pattern. There will be a space of about 1/16" between each stake and the base should measure around 3" x 7" when finished (a bit bigger is okay).



gray shows the overs

2. Upset the stakes. Start weaving with 1/2" flat natural. The weaving pattern for all the natural rows is: over 1, under 2. The 1st row starts on the outside of the far left stake just like in the diagram below. Overlap each row hiding your ends and start the next row in front of a stake. Smooth side of stakes should be facing you. Weave the side of the basket as the diagram below shows. The basket should get a little larger as you go, so that a piece of 3/16" flat oval will easily go between each stake when you do the border.



over 1, under 2  
over 3, under 3  
over 2, under 1  
over 3, under 3  
over 1, under 2

Gray shows the overs when using natural reed and the red shows the overs when using dyed reed.

3. Tuck all the stakes on the outside of the top row of weaving. Cut the stakes on the inside of the top row of weaving off so that their ends do not stick up over that top row of weaving.

4. Decide which side you like the best and make that the front of the basket. On the back of the basket find the center stake. Take your 2" side handle and insert it into the basket on top of the stakes on each side of the center stake. The handle should go under a couple of rows of weaving only where the handle is thin. See the picture to the right.



5. Place a piece of 1/2" flat oval on the inside and the outside of the top row of weaving, overlapping the ends an inch or two. Be sure to place the ends you see where the piece of 3/16" flat oval you're lashing with will cover them. Use clothespins to hold in place. Place a piece of #3 Seagrass on top of the last row of weaving, between the two pieces of 1/2" flat oval. I started mine against the handle and ran it around the top til I got to the handle again and cut another short piece for that space inside the handle. Lash with a piece of 3/16" flat oval going between each stake. You could go around a second time and make an "X"ed border if you like.